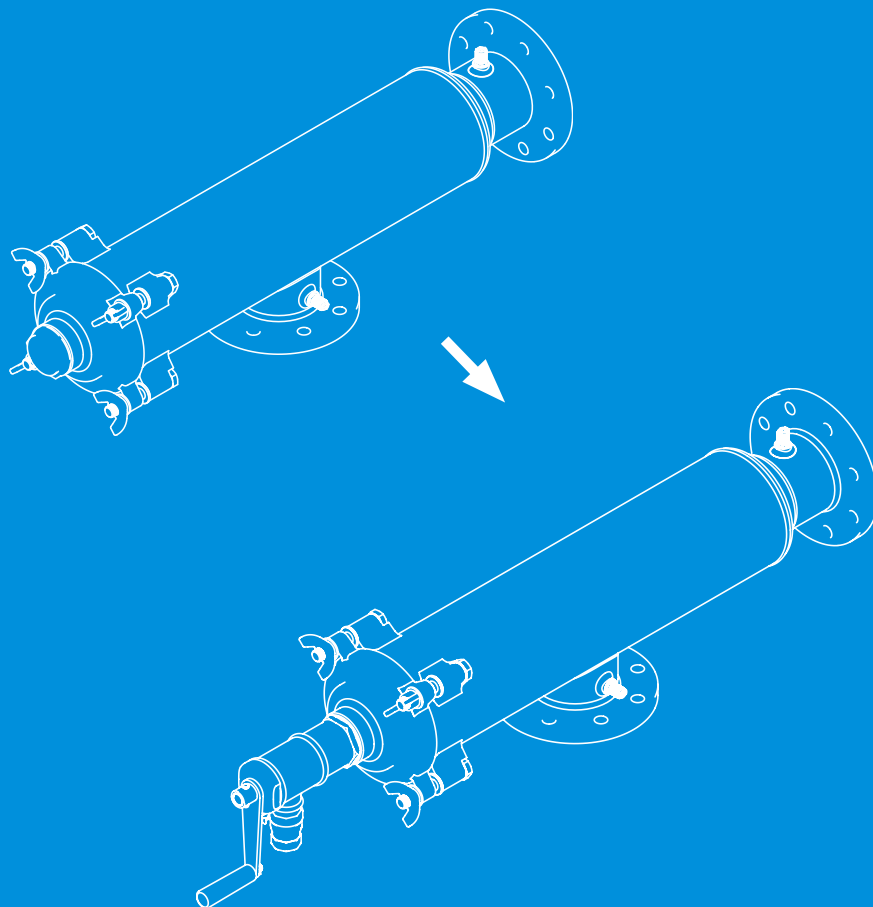


# On-Line Manual Models to Semi-Auto Conversion

October 2024 v1.0

/ User Manual



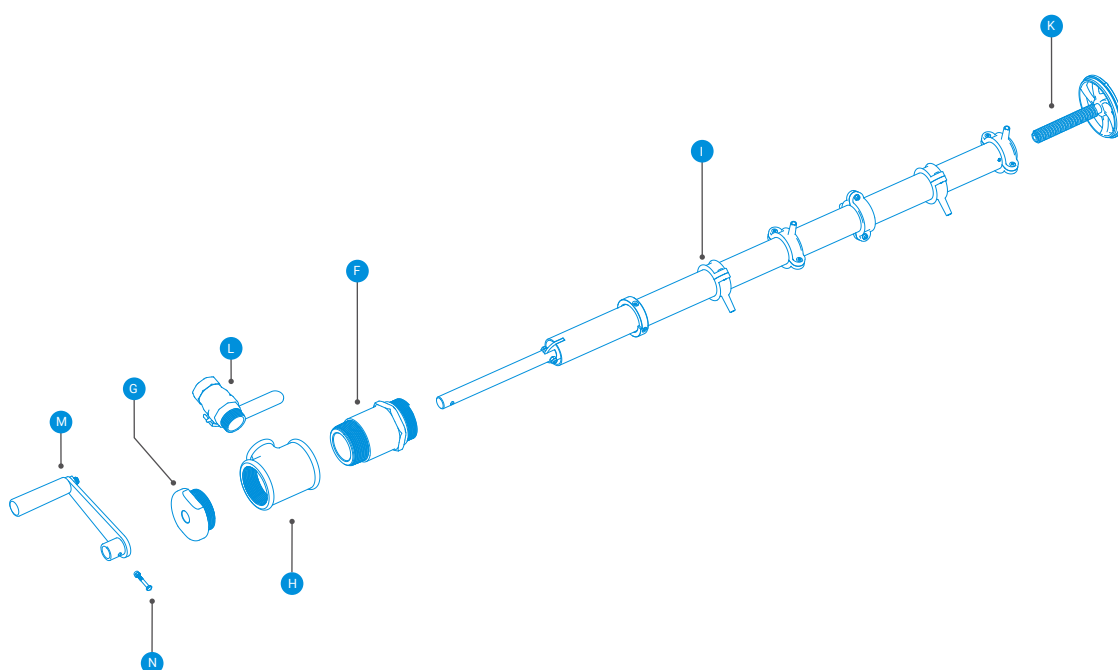
# / Conversion Kits

## → Catalog Numbers

Description	Catalog Number
KIT UPGRADE 1.5"-2" MAN.TO SEMI-AUTO.FIL	71985-000387
KIT UPGRADE 3" MAN. TO SEMI-AUTO. FILTER	71985-000388
KIT UPGRADE 4" MAN. TO SEMI-AUTO. FILTER	71985-000389
KIT UPGRADE 6" MAN. TO SEMI-AUTO. FILTER	71985-000390
KIT UPGRADE 8" MAN. TO SEMI-AUTO. FILTER	71985-000391

## → Conversion Kit Parts

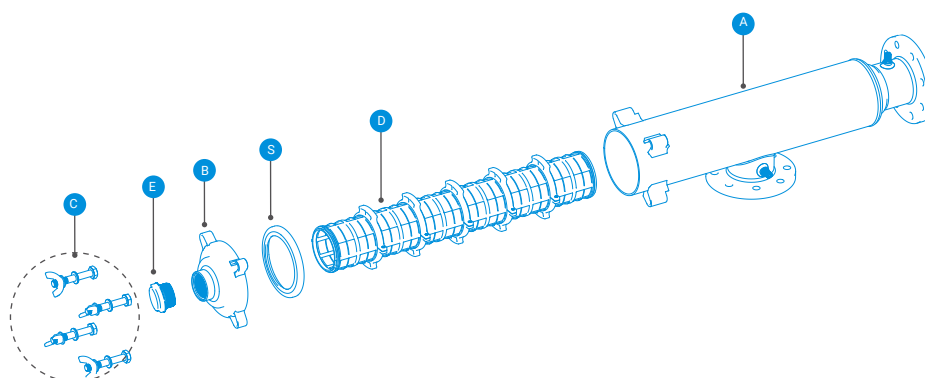
#	Description
F	Adaptor pipe
G	Plastic cap
H	Tee
I	Suction Scanner shaft
K	Drive bolt
L	Metal Valve
M	Handle
N	Handle pin



# / Conversion - Step by Step

## → Disassembly

1. Close the water inlet valve and drain the filter. Make sure the filter is not under pressure before operation
2. Open the bolts **(C)**, and remove the filter cover **(B)**, gasket **(S)** and screen element **(D)**
3. Remove the PVC cap **(E)** from the cover (the PVC cap will not be needed after the conversion)

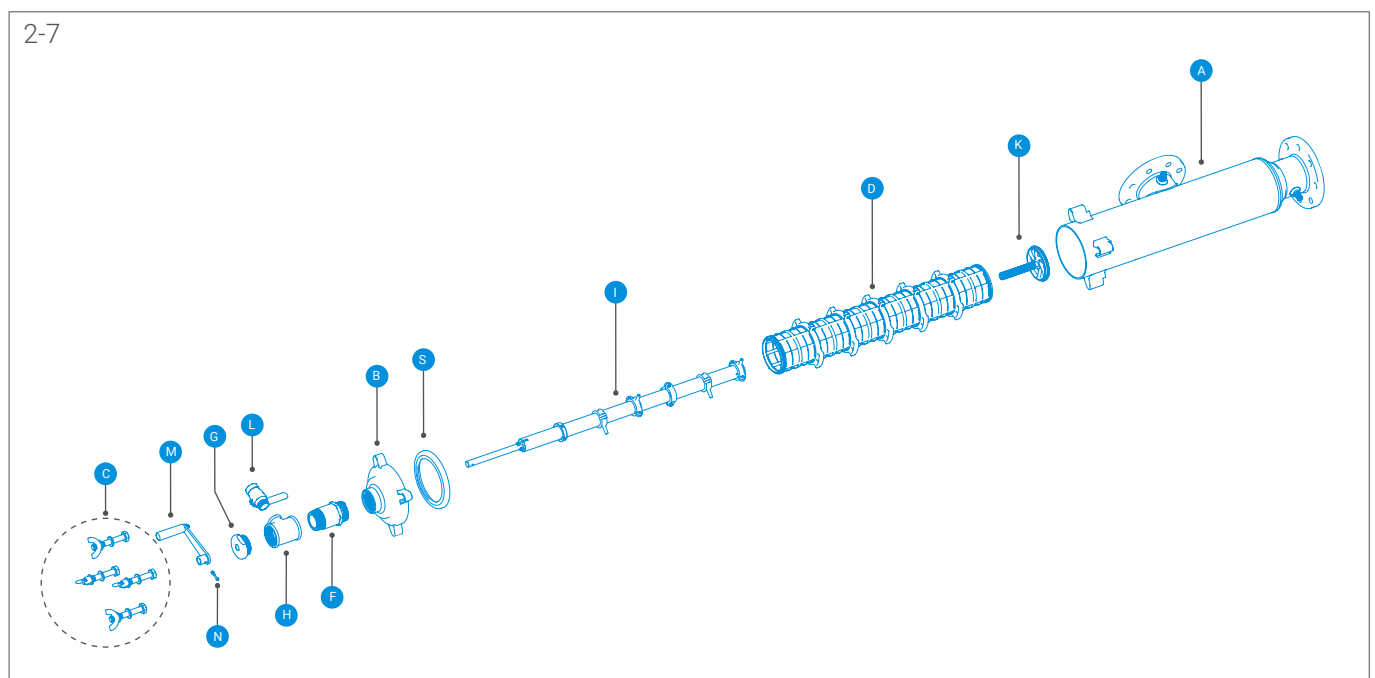
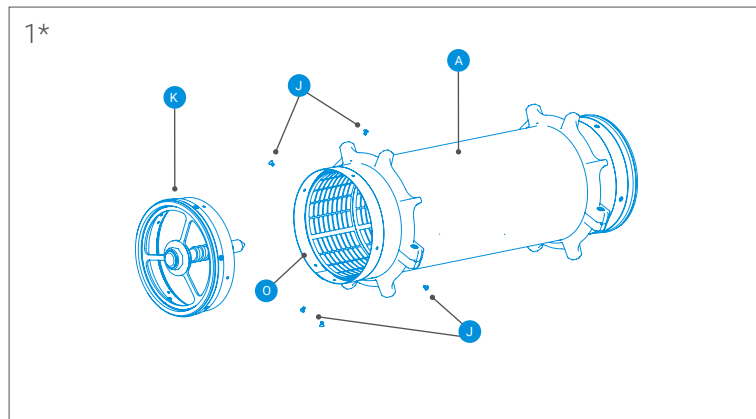


## → Assembly

1. Place the drive bolt (**K**) and push tight into the inner side of the filter screen element (**B**)
  - \* On 6" / 8" filter models make sure to tighten the screws (**J**) around the PVC ring (**O**). When both parts assembled return the screen element back into the filter body (**A**), while the drive bolt is on the inner side
2. Insert the suction scanner shaft (**I**) to the drive bolt (**K**)
3. Screw the adaptor pipe (**F**) and Tee (**H**) into the cover (**B**) socket
4. Place the cap (**B**) and gasket (**S**) back on the filter body while the suction shaft top is sticking out through the plastic cap (**G**) hole at the edge of the Tee (**H**)
5. Position the handle (**M**) on the top the suction scanner shaft (**I**), align the hole, and insert the handle pin (**N**) through the handle. Gently press the pin until it reaches final position inside the handle.  
Rotate the handle to tighten the scanner shaft to the drive bolt and ensure that the scanner mechanism rotates freely
6. Place and secure the bolts tight (**C**) in the filter cover (**B**) holes
7. Connect the metal valve (**L**) to the bushing T connection (**H**) (mind the O-rings)

\* The conversion is only valid for v.2 manual metal ScreenGuard

\*\* For 6" and 8" ScreenGuard v.2 filters produced before 10/2024 a PVC ring (71985-000416) for the screen element must be ordered separately to replace the PVC ring in place (**O**)





04-1024-FLT-OL-IOM-0010-EN



[www.netafim.com](http://www.netafim.com)