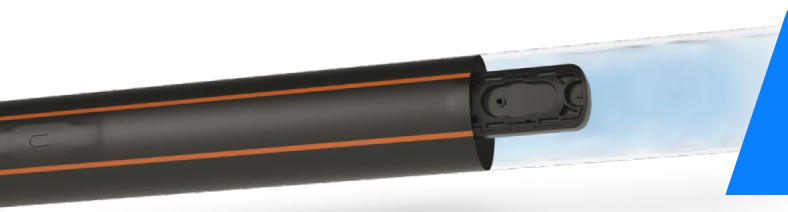


# DripNet PC™ AS TWD & MWD

Compact integral pressure-compensated, continuously self-flushing, anti-siphon mechanism dripper for semi permanent applications

→ 12125 - 12150 - 12200 - 12250 - 16125 - 16150 - 16200  
16250 - 22135 - 22150 - 22250 - 25135 - 25150 - 25250



Pressure-compensated



Anti-Siphon mechanism



Self-flushing mechanism

## / Benefits & Features

- **Pressure-compensated** Precise and equal amounts of water delivered over a broad pressure range, ensuring 100% uniformity of water and nutrient distribution along the laterals.
- **Anti-Siphon mechanism** Prevents contaminants from being drawn into the dripper, making it ideal for sub surface applications.
- **Continuously self-flushing** Flushes debris, throughout operation, while ensuring constant dripper operation.
- **Wide filtration area** Makes DripNet PC™ highly resistant to clogging with poor quality water, thus increasing filtration efficiency.
- **TurboNet™** Labyrinth ensures wide water passages, to increase flushing efficiency. The water is drawn into the dripper from the stream center, preventing the entrance of sediments into the drippers.

## / Specifications

- ✓ Pressure-compensated range: 0.25/ 0.40/ 0.60-2.5/ 3.0/ 3.5 bar (according to flow rate model & driplines wall-thickness).
- ✓ Recommended filtration: depending on dripper flow rate. Filtration method selected based on the kind and concentration of dirt particles contained in the water. Wherever sand exceeding 2 ppm exists in the water, a Hydrocyclone shall be installed before the main filter. Where sand/silt/clay solids exceed 100 ppm, pre treatment shall be applied following Netafim expert instructions.
- ✓ TurboNet™ labyrinth with large water passage.
- ✓ Weldable into thin and medium wall driplines (0.31, 0.34, 0.38, 0.50, 0.63 mm).
- ✓ Injected dripper, very low CV with injected silicon diaphragm.
- ✓ High UV resistant. Resistant to standard nutrients used in agriculture.
- ✓ DripNet PC™ driplines meet ISO 9261 Standards with Israel Standard Institute (SII)-certified production.

## → DRIPPERS TECHNICAL DATA

| FLOW RATE* (L/H) | WORKING PRESSURE RANGE (BAR) | WATER PASSAGES DIMENSIONS WIDTH-DEPTH-LENGTH (MM) | FILTRATION AREA (MM <sup>2</sup> ) | CONSTANT K | EXPONENT* X | RECOMMENDED FILTRATION (MICRON)/(MESH) |
|------------------|------------------------------|---|------------------------------------|------------|-------------|--|
| 0.6              | 0.25 - 2.5                   | 0.52 x 0.60 x 22                                  | 42                                 | 0.6        | 0           | 130/120                                |
| 1.0              | 0.40 - 3.0                   | 0.61 x 0.60 x 8                                   | 42                                 | 1.0        | 0           | 130/120                                |
| 1.6              | 0.40 - 3.0                   | 0.76 x 0.73 x 8                                   | 42                                 | 1.6        | 0           | 200/80                                 |
| 2.0              | 0.40 - 3.5                   | 0.84 x 0.80 x 8                                   | 42                                 | 2.0        | 0           | 200/80                                 |
| 3.0              | 0.40 - 3.5                   | 1.02 x 0.88 x 8                                   | 42                                 | 3.0        | 0           | 200/80                                 |
| 3.8              | 0.60 - 3.5                   | 1.02 x 0.88 x 8                                   | 42                                 | 3.8        | 0           | 200/80                                 |

\* Within working pressure range

## → DRIPLINES TECHNICAL DATA

| MODEL | INSIDE DIAMETER (MM) | WALL THICKNESS (MM) | OUTSIDE DIAMETER (MM) | MAX. WORKING PRESSURE (BAR) | MAXIMUM FLUSHING PRESSURE (BAR) | KD   |
|-------|----------------------|---------------------|-----------------------|-----------------------------|---------------------------------|------|
| 12125 | 11.80                | 0.31                | 12.42                 | 2.5                         | 2.9                             | 1.35 |
| 12150 | 11.80                | 0.38                | 12.56                 | 3.0                         | 3.5                             | 1.35 |
| 12200 | 11.80                | 0.50                | 12.80                 | 3.0                         | 3.9                             | 1.35 |
| 12250 | 11.80                | 0.63                | 13.06                 | 3.0                         | 3.9                             | 1.35 |
| 16125 | 16.20                | 0.31                | 16.82                 | 1.8                         | 2.1                             | 0.40 |
| 16150 | 16.20                | 0.38                | 16.96                 | 2.2                         | 2.5                             | 0.40 |
| 16200 | 15.50                | 0.50                | 16.50                 | 2.5                         | 3.3                             | 0.55 |
| 16250 | 15.50                | 0.63                | 16.76                 | 2.8                         | 3.6                             | 0.55 |
| 22135 | 22.20                | 0.34                | 22.88                 | 1.5                         | 1.7                             | 0.18 |
| 22150 | 22.20                | 0.38                | 22.96                 | 1.8                         | 2.1                             | 0.18 |
| 22250 | 22.20                | 0.63                | 23.46                 | 2.5                         | 2.9                             | 0.18 |
| 25135 | 25.00                | 0.34                | 25.68                 | 1.2                         | 1.4                             | 0.04 |
| 25150 | 25.00                | 0.38                | 25.76                 | 1.4                         | 1.6                             | 0.04 |
| 25250 | 25.00                | 0.63                | 26.26                 | 2.0                         | 2.3                             | 0.04 |

→ **DRIPLINES PACKAGE DATA (ON CARTON COIL)**

| MODEL | WALL THICKNESS (MM) | DISTANCE BETWEEN DRIPPERS (M) | COIL LENGTH (M) | AVERAGE* COIL WEIGHT (KG) | COILS PER PALLET (UNITS) | COILS IN A 40 FEET CONTAINER (UNITS) | TOTAL IN A 40 FEET CONTAINER (M) |
|-------|---------------------|-------------------------------|-----------------|---------------------------|--------------------------|--------------------------------------|----------------------------------|
| 12125 | 0.31                | 0.15 to 0.19                  | 900             | 14.3                      | 12                       | 480                                  | 432000                           |
|       |                     | 0.20 to 0.35                  | 1000            | 13.6                      |                          |                                      | 480000                           |
|       |                     | 0.40 to 1.00                  | 1000            | 13.0                      |                          |                                      | 480000                           |
| 12150 | 0.38                | 0.15 to 0.19                  | 600             | 11.1                      | 12                       | 480                                  | 288000                           |
|       |                     | 0.20 to 0.35                  | 700             | 11.3                      |                          |                                      | 336000                           |
|       |                     | 0.40 to 1.00                  | 700             | 10.9                      |                          |                                      | 336000                           |
| 12200 | 0.50                | 0.15 to 0.19                  | 650             | 14.9                      | 12                       | 480                                  | 312000                           |
|       |                     | 0.20 to 0.35                  | 750             | 15.4                      |                          |                                      | 360000                           |
|       |                     | 0.40 to 1.00                  | 850             | 17.4                      |                          |                                      | 408000                           |
| 12250 | 0.63                | 0.15 to 0.19                  | 600             | 16.7                      | 12                       | 480                                  | 288000                           |
|       |                     | 0.20 to 0.35                  | 700             | 17.8                      |                          |                                      | 336000                           |
|       |                     | 0.40 to 1.00                  | 800             | 19.9                      |                          |                                      | 384000                           |
| 16125 | 0.31                | 0.15 to 0.19                  | 1000            | 20.3                      | 12                       | 480                                  | 480000                           |
|       |                     | 0.20 to 0.35                  | 1150            | 21.3                      |                          |                                      | 552000                           |
|       |                     | 0.40 to 1.00                  | 1300            | 22.7                      |                          |                                      | 624000                           |
| 16150 | 0.38                | 0.15 to 0.19                  | 900             | 21.2                      | 12                       | 480                                  | 432000                           |
|       |                     | 0.20 to 0.35                  | 1000            | 21.1                      |                          |                                      | 480000                           |
|       |                     | 0.40 to 1.00                  | 1200            | 25.6                      |                          |                                      | 576000                           |
| 16200 | 0.50                | 0.15 to 0.19                  | 750             | 19.9                      | 12                       | 480                                  | 360000                           |
|       |                     | 0.20 to 0.35                  | 800             | 19.6                      |                          |                                      | 384000                           |
|       |                     | 0.40 to 1.00                  | 850             | 19.1                      |                          |                                      | 408000                           |
| 16250 | 0.63                | 0.15 to 0.19                  | 700             | 26.5                      | 12                       | 480                                  | 336000                           |
|       |                     | 0.20 to 0.35                  | 800             | 26.9                      |                          |                                      | 384000                           |
|       |                     | 0.40 to 1.00                  | 800             | 26.1                      |                          |                                      | 384000                           |
| 22135 | 0.34                | 0.15 to 0.19                  | 750             | 22.1                      | 12                       | 480                                  | 360000                           |
|       |                     | 0.20 to 0.35                  | 800             | 21.6                      |                          |                                      | 384000                           |
|       |                     | 0.40 to 1.00                  | 950             | 24.5                      |                          |                                      | 456000                           |
| 22150 | 0.38                | 0.15 to 0.19                  | 650             | 21.1                      | 12                       | 480                                  | 312000                           |
|       |                     | 0.20 to 0.35                  | 750             | 22.4                      |                          |                                      | 360000                           |
|       |                     | 0.40 to 1.00                  | 850             | 24.4                      |                          |                                      | 408000                           |
| 22250 | 0.63                | 0.15 to 0.19                  | 450             | 26.6                      | 12                       | 480                                  | 216000                           |
|       |                     | 0.20 to 0.35                  | 500             | 28.0                      |                          |                                      | 240000                           |
|       |                     | 0.40 to 1.00                  | 500             | 27.4                      |                          |                                      | 240000                           |
| 25135 | 0.34                | 0.15 to 0.19                  | 550             | 16.7                      | 12                       | 480                                  | 264000                           |
|       |                     | 0.20 to 0.35                  | 700             | 19.6                      |                          |                                      | 336000                           |
|       |                     | 0.40 to 1.00                  | 700             | 19.2                      |                          |                                      | 336000                           |
| 25150 | 0.38                | 0.15 to 0.19                  | 450             | 15.0                      | 12                       | 480                                  | 216000                           |
|       |                     | 0.20 to 0.35                  | 600             | 18.7                      |                          |                                      | 288000                           |
|       |                     | 0.40 to 1.00                  | 600             | 18.3                      |                          |                                      | 288000                           |
| 25250 | 0.63                | 0.15 to 0.19                  | 450             | 20.9                      | 12                       | 480                                  | 216000                           |
|       |                     | 0.20 to 0.35                  | 500             | 25.0                      |                          |                                      | 240000                           |
|       |                     | 0.40 to 1.00                  | 500             | 24.7                      |                          |                                      | 240000                           |

\* Calculated weight average.  
For further details see "Average Coil Weight Disclaimer".

06-0620-DRP-PS-0011-EN