

# CoolNet™ Pro

## SUPER-FINE MISTER

Super-fine static mister especially designed for cooling and humidifying greenhouses and livestock, and for irrigating over rooting tables.



Superior Uniformity



Bridge-Free Micro-Emitter



Multiple Filed Applications

Applications



Cooling



Humidification



Rooting

## Benefits & Features

### High Cooling & Humidification efficiency

- ✓ CoolNet™ Pro has unique design which distribute micro sized droplet at a relatively low pressure. It provides an average droplet size of 65 microns at a 4.0 bar working pressure

### Multiple filed applications

- ✓ CoolNet™ Pro is designed to achive high performance in different applications: cooling, humidifying and irrigation of rooting tables

### Keep your crop from drips damage

- ✓ **Drip-less micro-emitter** - CoolNet Pro is designed as a bridgeless micro-emitter, preventing drips on the plants located below, to prevent plant damages
- ✓ **Controlled start & stop operation** – With the Reliable anti-drain (AD) valves, all the CoolNet Pro micro-emitters, start and stop simultaneously, and prevent distribution pipe drainage and dripping

### Durability and low maintenance

- ✓ **High quality & resistant.** Made of a highest quality material makes it durable and resistant to standard agrochemicals and nutrients and resistant to acid treatments
- ✓ **The components are interchangeable.** Flushing for maintenance can be done easily

## Specs. & Recommendations

- **3 different flow rates:**  
5.5, 7.5, 14.0 L/H and plug nozzle
- **Nominal flow rate at:** 4.0 bar
- **Recommended pressure range:** 3.0 - 5.0 bar
- **1 type of inlet connector:** Press fit, male inlet
- **3 different configurations:**  
"C" - Cross, 4 nozzles  
"T" - Tee, 2 nozzles  
"S" - Straight, 1 nozzle
- **Nozzle color coded for easy identification of the flow rate:**  
5.5 L/H Light green  
7.5 L/H Silver Gray  
14.0 L/H Sky Blue  
Plug nozzle Orange
- Acid resistant (AA) raw materials, thus allowing the application chemicals to pass through the system. The system can be cleaned by application of suitable acid treatments
- **Recommended filtration:** 130 mic. / 120 mesh

**\*Note:** Filtration method shall be selected based on the type and concentration of the dirt particles contained in the water. Wherever sand exceeding 2 ppm exists in the water, a Hydrocyclone shall be installed before the main filter. Wherever sand/ silt/ clay solids exceed 100 ppm, pre-treatment shall be applied according to Netafim™ instructions

## → TECHNICAL DATA

MODEL	NOZZLE CODE COLOR	NOZZLE SIZE (MM)	RECOMMENDED WORKING PRESSURE (BAR)	CONSTANT K	EXPONENT X
055	LIGHT GREEN	0.51	4.0 TO 5.0	1.03	0.45
075	SILVER GREY	0.61	4.0 TO 5.0	1.40	0.45
140	SKY BLUE	0.88	4.0 TO 5.0	2.66	0.45

## → PACKAGING DATA

COOLNET™ PRO	QUANTITY P/BOX UNITS	BOX SIZE (CM X CM X CM)	BOX WEIGHT (KG)	BOXES P/PALLET	TOTAL UNITS P/PALLET	PALLET WEIGHT (KG)
HEAD , CROSS UNIT WITH MALE CONN	750	18 X 34 X 79	11.0	20	15,000	220
COMPLETE STAND (30 CM) W/STABILIZER & AD VALVE	125	28 X 28 X 57	8.4	32	4,000	269
COMPLETE STAND (60 CM) W/STABILIZER & AD VALVE	100	18 X 34 X 79	8.2	20	2,000	185
HEAD , T UNIT WITH MALE CONN	1,000	28 X 28 X 57	14.8	32	32,000	474
COMPLETE STAND (30 CM) W/STABILIZER & AD VALVE	150	28 X 28 X 57	9.9	32	4,800	317
COMPLETE STAND (60 CM) W/STABILIZER & AD VALVE	100	18 X 34 X 79	8.2	20	2,000	173
HEAD , ONE OUTLET	5,000	18 X 34 X 79	21.5	20	100,000	430

## → ORDERING INFORMATION

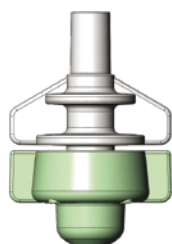
Flowchart to determine the desired product definition

**How to use:** To determine the desired product definition select one of every set of options displayed on the chart.

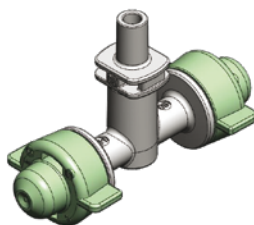
EMITTER		NOZZLE'S NUMBER*	HEAD INLET CONNECTOR		FLOW		STAND ASSEMBLY		CONNECTOR TO LATERAL		ACCESSORIES	
CoolNet™ Pro	COOLPRO	One straight S	Press fit	MIC	5.5 l/h	055	Head only	HEAD ONLY	Barb	BC	AD Valve 2.0/0.9 bar	AD20
		Two on a "T" T			7.5 l/h	075	Head + 15 cm microtube + stabilizer	15CM W/STB	Press fit	PFC	AD Valve 3.0/1.5 bar	AD30
		Four on a cross C			14.0 l/h	140	Head + 30 cm microtube + stabilizer	30CM W/STB	3/8" Conic press fit	3/8C	AD Valve 4.0/1.8 bar	AD40
							Head + 60 cm microtube + stabilizer	60CM W/STB	M11 press fit	M11C		
							Head + 90 cm microtube + stabilizer	90CM W/STB				
							Head + xxx cm microtube + stabilizer	XXX CM / STB				
							*When selecting an undefined tube length, add the desired length in writing.					
							** Standard supplied microtube : 4*6, 5 SSPE colored light gray					

## → \*NOZZLE'S NUMBER

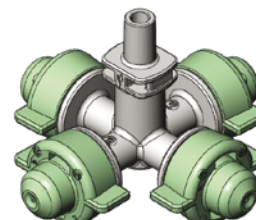
CoolNet™ PRO SINGLE



CoolNet™ PRO TEE



CoolNet™ PRO CROSS



→ **CoolNet™ Pro HEAD ONLY**  
(WITH MALE INLET CONNECTOR)

MODEL	SINGLE "S"	TEE "T"	CROSS "C"
055	63100-048600	63100-050000	63100-052000
075	63100-054000	63100-056300	63100-058300
140	63100-055900	63100-055950	63100-055980

→ **CoolNet™ Pro HEAD + AD VALVE 40**

MODEL	SINGLE "S"	TEE "T"	CROSS "C"
055	63100-049420	63100-050010	63100-052200
075			63100-058500
140			63100-055985

→ **CoolNet™ Pro ASSEMBLY STANDS**

**CoolNet™ Pro, UD STAND, MODEL "S", FLOW YYY, MICRO-TUBE LENGTH XXX, STABILIZER, BARB CONNECTOR TO LATERAL PIPE, AD VALVE 40**

MODEL	15 CM	30 CM	60 CM	90 CM
055	63100-049000	63100-049400		
075	63100-054300	63100-055100		
140				

**CoolNet™ Pro, UD STAND, MODEL "S", FLOW YYY, MICRO-TUBE LENGTH XXX, STABILIZER, PRESS-FIT CONNECTOR TO LATERAL PIPE, AD VALVE 40**

MODEL	15 CM	30 CM	60 CM	90 CM
055				
075	63100-054600	63100-055800		
140				

**CoolNet™ Pro, UD STAND, MODEL "T", FLOW YYY, MICRO-TUBE LENGTH XXX, STABILIZER, BARB CONNECTOR TO LATERAL PIPE, AD VALVE 40**

MODEL	15 CM	30 CM	60 CM	90 CM
055	63100-050300	63100-050700		
075	63100-056700	63100-057100		
140				

**CoolNet™ Pro, UD STAND, MODEL "T", FLOW YYY, MICRO-TUBE LENGTH XXX, STABILIZER, PRESS-FIT CONNECTOR TO LATERAL PIPE, AD VALVE 40**

MODEL	15 CM	30 CM	60 CM	90 CM
055		63100-050900	63100-051100	
075		63100-057300		
140				

**CoolNet™ Pro UD STAND, MODEL "C", FLOW YYY, MICRO-TUBE LENGTH XXX, STABILIZER, BARB CONNECTOR TO LATERAL PIPE, AD VALVE 40**

MODEL	15 CM	30 CM	60 CM	90 CM
055	63100-052400	63100-053100	63100-053960	63100-053980
075	63100-058900	63100-059600	63100-069960	
140				

**CoolNet™ Pro, UD STAND, MODEL "C", FLOW YYY, MICRO-TUBE LENGTH XXX, STABILIZER, PRESS-FIT CONNECTOR TO LATERAL PIPE, AD VALVE 40**

MODEL	15 CM	30 CM	60 CM	90 CM
055	63100-052700	63100-053500	63100-053965	
075	63100-059200	63100-060000	63100-070200	63100-071010
140	63100-055990	63100-055991		

Missing catalog numbers available upon request. All assembly stands include 4\*6.5 mm gray SSPE micro-tube. Other stand combinations can be ordered based on the attached flowchart which can help determine the desired product requirement.